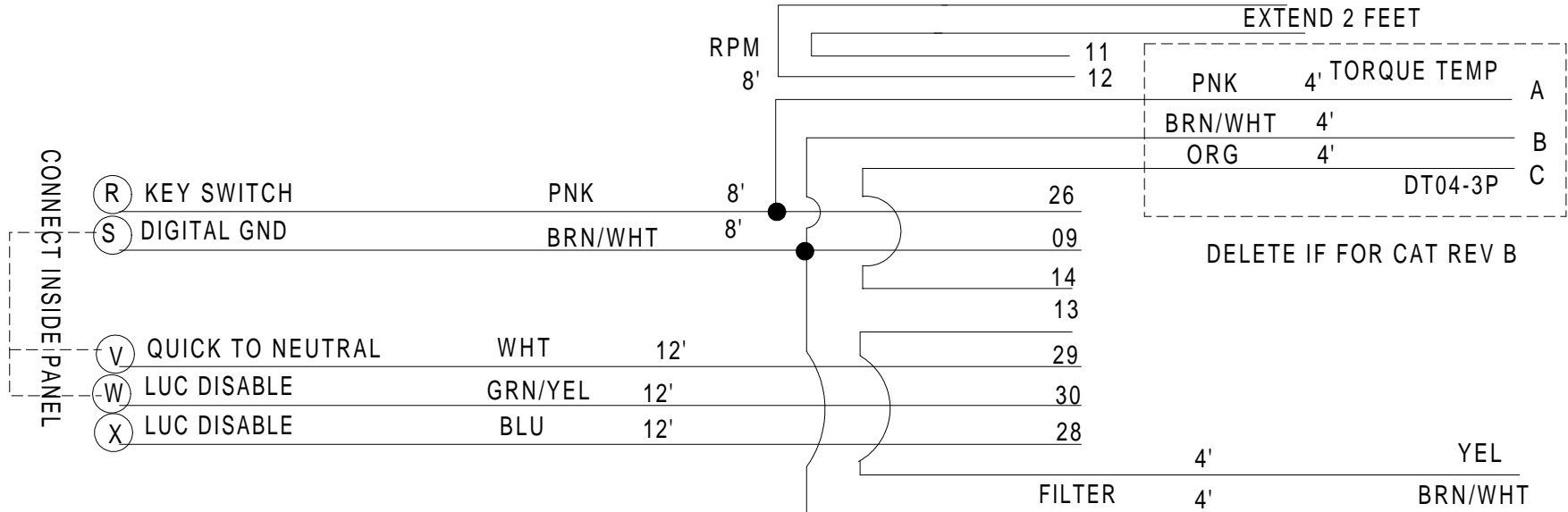


B		GND	BLK	12'	36
C					37
D		+24V	RED	12'	31
E		+24V	RED	12'	01
G		GND	BLK	12'	32
K	J1939(+)		YEL	12'	38
L	J1939(-)		GRN	12' TWIST	17
M	SHIELD		BLK/WHT	12'	18
N	D-LNK(-)		BRN	12'	16
P	D-LNK(+)		GRN	12' TWIST	06
					07

40 PIN CUSTOMER  
SHORT PIN 8 TO PIN 10

DT06-2S

EXTEND 2 FEET



DWG#: X275	DWG NAME: HARNESS, TRANS TH48	DATE: 11/24/05
File: C:\X275\X275HNS TH48 TRAN PMPCO.DC		Dwg. By:
Dwg Not to Scale	Revisions 0	<b>Whitlock Instrument</b> 1300 N. Texas Odessa, Tx 79761 WEB SITE: noflo.com CONTACT: LARRY RITCHIE 432-337-3412 FAX: 432-335-5926 larry@noflo.com
W.I.Part#	Num. Date:	
Material:		
Tolerance:		